



C16M...

Weighing module for
20 t ... 200 t

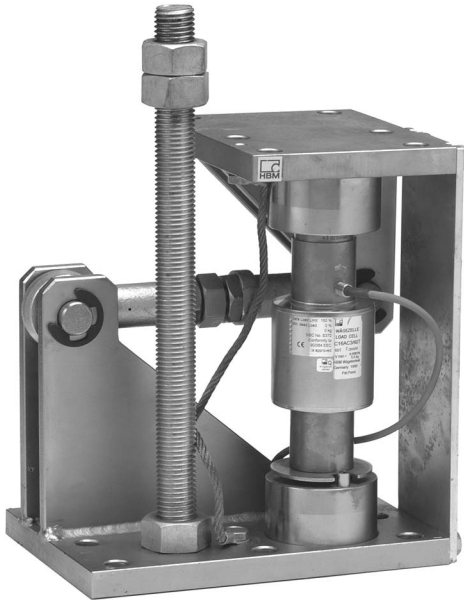
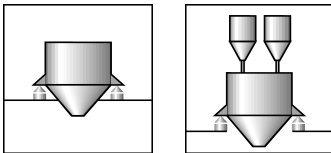


Fig. with accessory 1-ZAC16/MSL60T

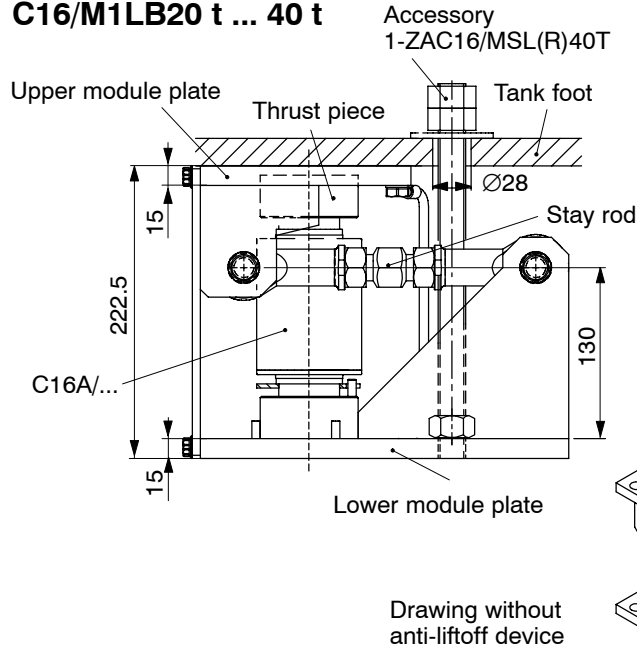
Special features

- Equipped with self-restoring rocker pin load cell C16 class D1, C3 or C4 according to OIML R60
- Stay rod included in the scope of supply
- Designed for lift-off device (see accessories)
- Maintenance-free
- Compact installation at minimum installation height
- Easy installation
- Two versions available:
 - Galvanized material
 - Stainless steel
- Certified by Technical Inspection Agency (TUV)

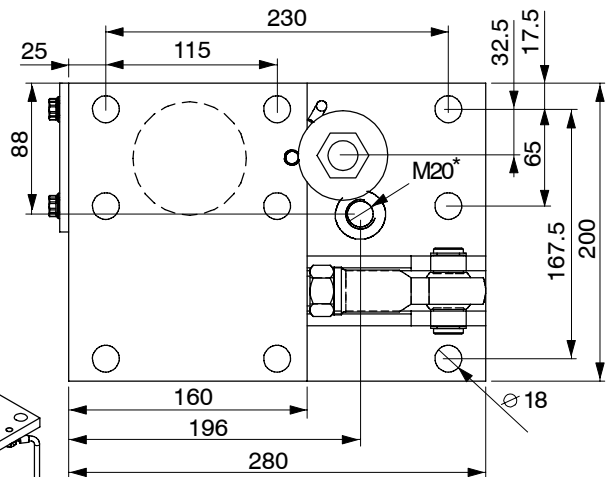


Dimensions (in mm; 1 mm = 0.03937 inches)

C16/M1LB20 t ... 40 t



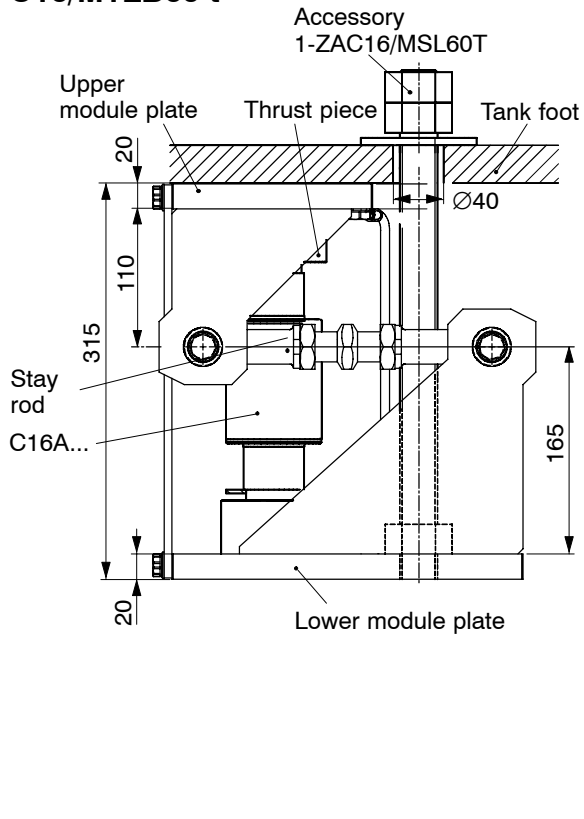
Top view,
drawing without tank foot



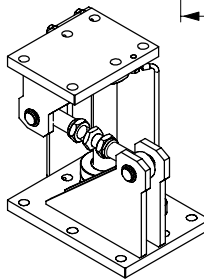
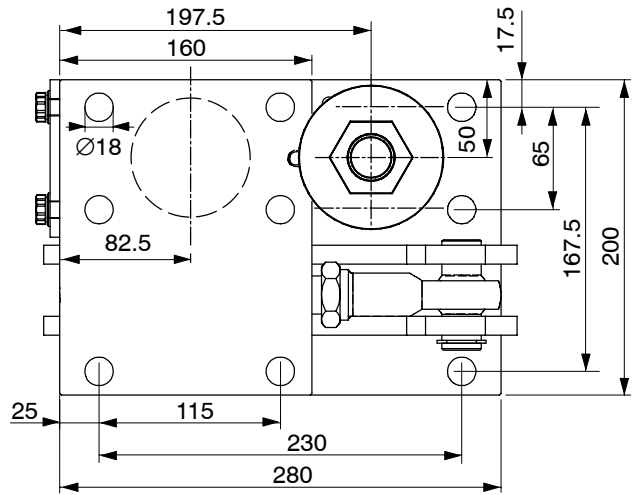
* Threat for alternative mounting of the lift-off device (accessory)

Dimensions (in mm; 1 mm = 0.03937 inches)

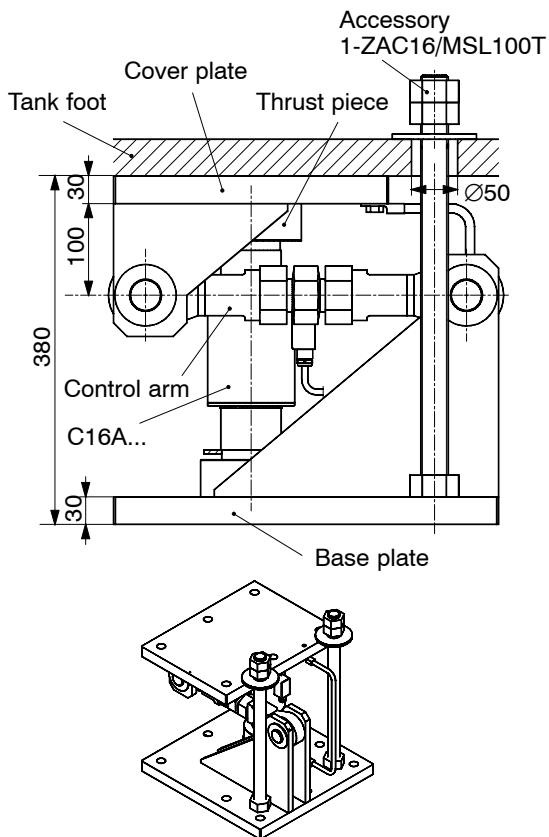
C16/M1LB60 t



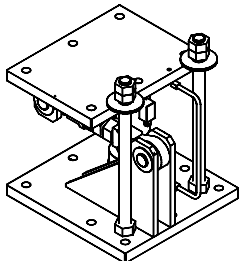
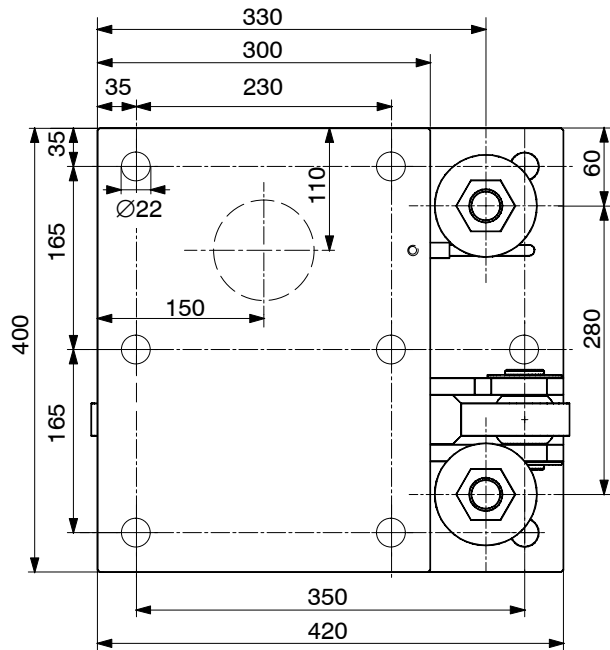
Top view, drawing without tank foot



C16/M1LB100 t + 200 t



Top view, drawing without tank foot



Specifications of the weighing module C16M...

Maximum capacity		20 t	30 t	40 t	60 t	100 t	200 t
Limit load	% of Maximum capacity	150					
Restoring force (at 1 mm side offset vertically to the control arm direction)	% of Applied load	0.49	0.76	0.94	0.52	0.48	0.81
Maximum permissible side offset transverse to the control arm axis	mm	± 4.0			± 5.0		
Maximum permissible horizontal force in the control arm direction	kN	50		100	150		
Max. permissible lifting force (when a lift-off device is used) ¹⁾	kN	80		120	240		
Material		Galvanized or stainless steel					
Weight, approx. (depending on the version, incl. load cell)	kg	20		55	105	107	

¹⁾ A lift-off device, for example a threaded rod (please see accessories), can be mounted in the assigned threaded hole.

For additional information on the appropriate load cells, please refer to the Data sheet C16A...


Ordering codes

C16/M1LB-Modules (incl. load cell C16A...), preferred types

Type	C16/M1LB
Material	Galvanized material
Accuracy class	D1 (OIML)
Maximum capacity	Order no.
20 t	1-C16/M1LB20T
30 t	1-C16/M1LB30T
40 t	1-C16/M1LB40T
60 t	1-C16/M1LB60T
100 t	1-C16/M1LB100T
200 t ²⁾	1-C16/M1LB200T ²⁾

²⁾ Accuracy class of the Load cell: 0.1

Ordering codes C16-Modules (incl. load cell C16A...), optional versions

Order no.		
K-C16M		
Code	Option 1: Material	
V	C16/MSL (Galvanized)	
R	C16/MSLR (Stainless steel) [only with Option 3 = 20 / 30 / 40]	
Code	Option 2: Accuracy	
0.1	0.1% [only with Option 3 = 200]	
D1	D1 (OIML) [only with Option 3 = 20 / 30 / 40 / 60 / 100]	
C3	C3 (OIML) [only with Option 3 = 20 / 30 / 40 / 60 / 100]	
C4	C4 (OIML) [only with Option 3 = 30 / 40 / 60]	
Code	Option 3: Capacity	
20	20t [only with Option 2 = D1 / C3]	
30	30t [only with Option 2 = D1 / C3 / C4]	
40	40t [only with Option 2 = D1 / C3 / C4]	
60	60t [only with Option 2 = D1 / C3 / C4]	
100	100t [only with Option 2 = D1 / C3]	
200	200t [only with Option 2 = 0.1]	
Code	Option 4: Ex protection (accord. to ATEX 95)	
N	non ATEX	
1	ATEX Zone 1 + 21 [only with Option 6 = N]	
2	ATEX Zone 2 + 22 (non-conductive dust) [only with Option 6 = N]	
21D	ATEX II G EExd [only with Option 6 = N]	
Code	Option 5: Cable length	
S12	12m (Standard) [only with Option 3 = 20 / 30]	
S20	20m (Standard) [only with Option 3 = 40 / 60 / 100 / 200]	
20	20m [only with Option 3 = 20 / 30]	
40	40m	
20M	20m (Metal braiding)	
Code	Option 6: Miscellaneous	
N	without	
L	with Lightning protection [only with Option 4 = N]	
i	with C16i Load cell (DIGITAL) [only with Option 2 = C3; Option 3 = 20 / 30 / 40 / 60; Option 4 = N]	

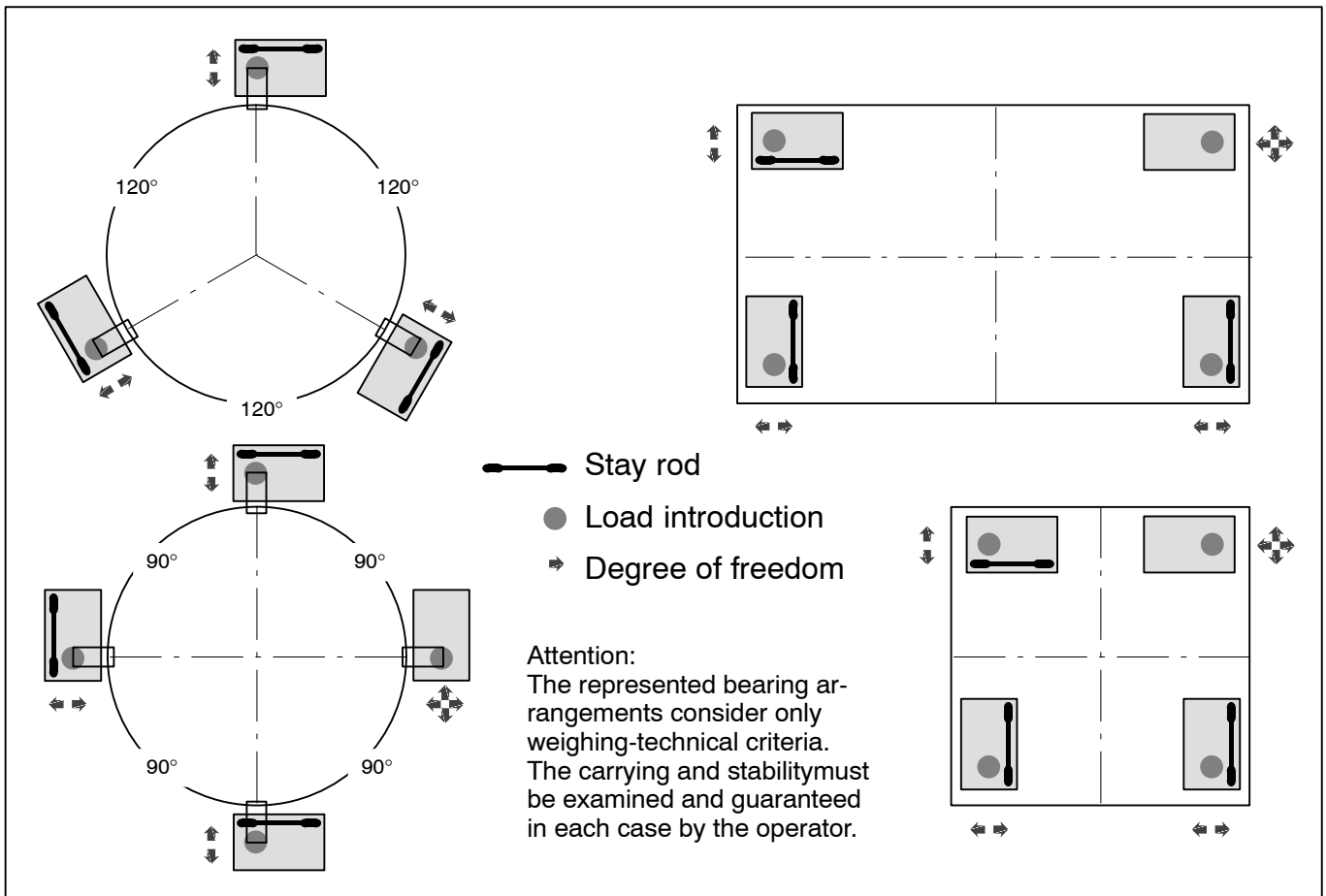
K-C16M - - - - - - -

[!!!]: Not all codes can be combined with each other. Please take heed of the terms in the square brackets!

Scope of delivery:

Weighing module complete mounted with stay rod, thrust pieces, ground wire and load cell C16A

Mounting examples for weighing modules with stay rods:



Accessories (to be ordered separately) each for **two** weighing modules (see Dimensions):

1-ZAC16/MSL40T, for C16/MSL20 t...40 t, consists of:

- 1 piece threaded rod M20x1000 ^{*)}, **galvanized**
- 6 pieces hexagonal nut M20 DIN 934, galvanized
- 2 pieces washer DIN 9021, Ø21 mm, galvanized

1-ZAC16/MSLR40T, for C16/MSLR20 t...40 t, consists of:

- 1 piece threaded rod M20x1000 ^{*)}, **stainless steel**
- 6 pieces hexagonal nut M20 DIN 934, stainless steel
- 2 pieces washer DIN 9021, Ø21 mm, stainless steel

1-ZAC16/MSL60T, for C16/MSL60 t, consists of:

- 1 piece threaded rod M30x1000 ^{*)}, **galvanized**
- 6 pieces hexagonal nut M30 DIN 934, galvanized
- 2 pieces washer DIN 9021, Ø31 mm, galvanized

1-ZAC16/MSL100T, for C16/MSL100 t + 200 t, consists of:

- 4 pieces threaded rod M30x1000 ^{*)}, **galvanized**
- 12 pieces hexagonal nut M30 DIN 934, galvanized
- 4 pieces washer DIN 9021, Ø31 mm, galvanized

^{*)} The threaded rods have to be adapted to the corresponding installation conditions on the customer side.

Further accessory:



Fixed bearings with the same installation height as the weighing module. Please find further information in a separate data sheet.

Modifications reserved.

All details describe our products in general form only. They are not to be understood as express warranty and do not constitute any liability whatsoever.

B0984-3.0 en

Hottinger Baldwin Messtechnik GmbH

Im Tiefen See 45, D-64293 Darmstadt, Germany

Tel.: +49 6151 803-0 Fax: +49 6151 803 9100

Email: support@hbm.com Internet: www.hbm.com



measurement with confidence